

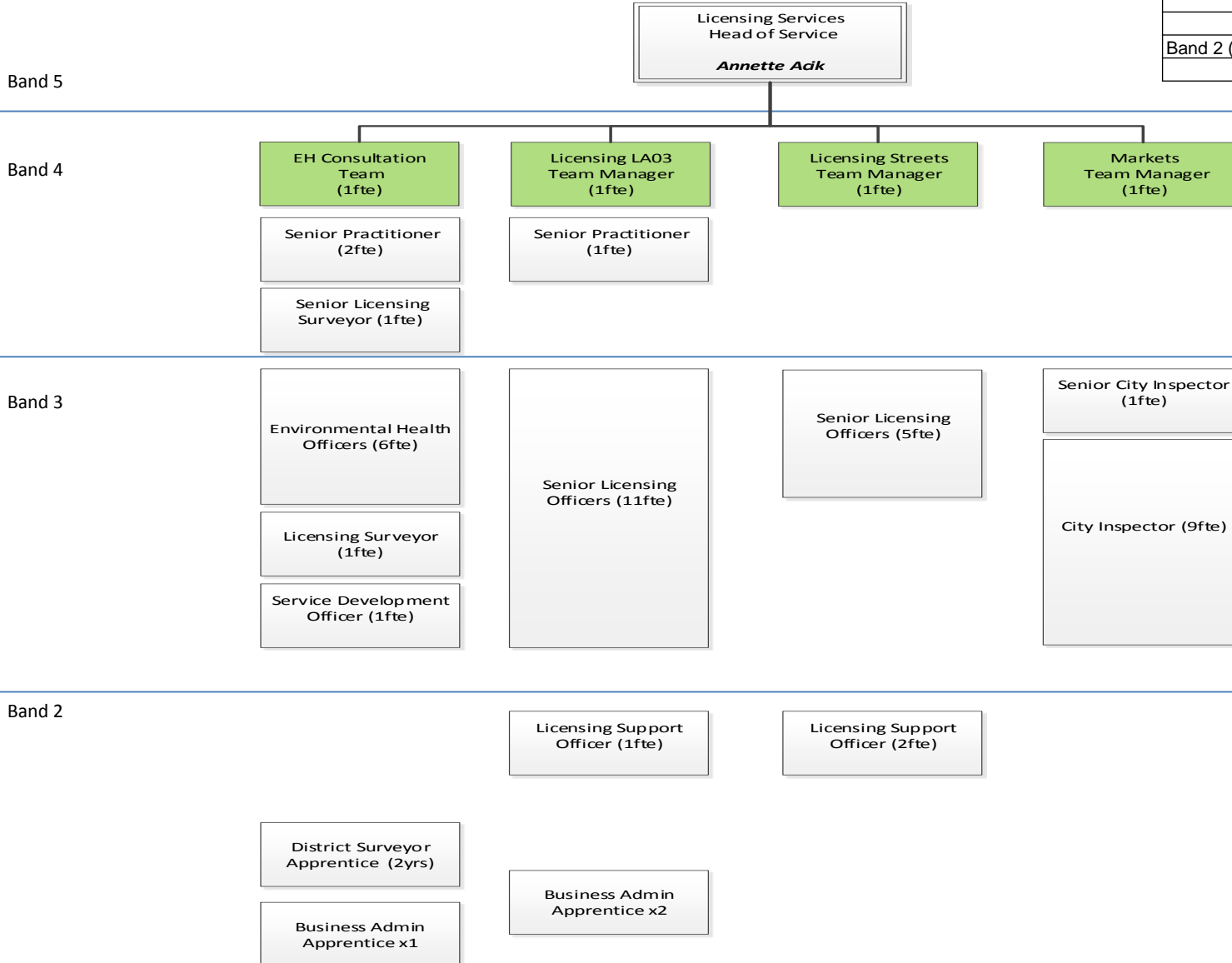
# Effective Neighbourhood Working

'as-is' Public Protection and  
Licensing structure  
V0.6



# City Management and Communities Public Protection and Licensing: Licensing Service

| Pay scale                     | AS IS FTE |
|-------------------------------|-----------|
| Band 6                        | 0         |
| Band 5                        | 1         |
| Band 4                        | 8         |
| Band 3                        | 34        |
| Band 2 (including apprentice) | 7         |
| <b>Total</b>                  | <b>50</b> |



# City Management and Communities Public Protection and Licensing: Community Safety

| Pay scale    | AS IS FTE |
|--------------|-----------|
| Band 6       | 0         |
| Band 5       | 1         |
| Band 4       | 8         |
| Band 3       | 14        |
| Band 2       | 10        |
| <b>Total</b> | <b>33</b> |

*Estab=30.0fte*

Band 5

Community Safety  
Head of Service  
Mick Smith Tel Ext:x4252

Band 4

Tasking & Analysis  
Team Manager  
(1fte)

Youth, Crime &  
Disorder  
Team Manager  
(1fte)

PREVENT  
Programme Manager  
(funded)  
(1fte)

Emergency Planning -Sr  
Emergency Planning  
Officer  
(1fte)

Community Safety  
Commissioning\_1Mana  
ger  
(1fte)

Community Safety  
Commissioning\_2Mana  
ger  
(1fte)

Emergency  
Planning Officer (1fte)

Commissioning  
Manager MOPAC  
Funded (1fte)

Band 3

Data Analyst (3fte)

Tasking  
Coordinator (1fte)

SMC Supervisor (1fte)

Gangs Caseworker  
(funded) (1fte)

ASB Caseworker  
(2fte)

ASB Caseworker (1fte)  
funded

2 x Children's Services  
Staff Managed within  
this team  
Gangs Data &  
Intelligence Analyst  
Information Access  
Officer

Prevent Officer  
Engagement (funded)  
(1fte)

Prevent Officer  
(Education) (funded)  
(1fte)

Assistant Contingency  
Planning Officer (1fte)

Business Continuity  
Officer (1fte)

Band 2

SMC Operators (4fte)

Prevent Engagement  
Development Officer  
(funded) (1fte)

Prevent Support &  
Development Officer  
(funded) (1fte)

Business Support  
Apprentice x1

DV Administrator (1fte)

Apprentice x1

Reducing Re-offending  
Researcher (funded)  
(1fte)



# City Management and Communities Public Protection and Licensing: Commercial Services

| Pay scale    | AS IS FTE |
|--------------|-----------|
| Band 6       | 0         |
| Band 5       | 1         |
| Band 4       | 15.2      |
| Band 3       | 35.8      |
| Band 2       | 11        |
| <b>Total</b> | <b>63</b> |

**Commercial Services**  
**Head of Service**  
**Sue Jones Tel Ext: x2721**

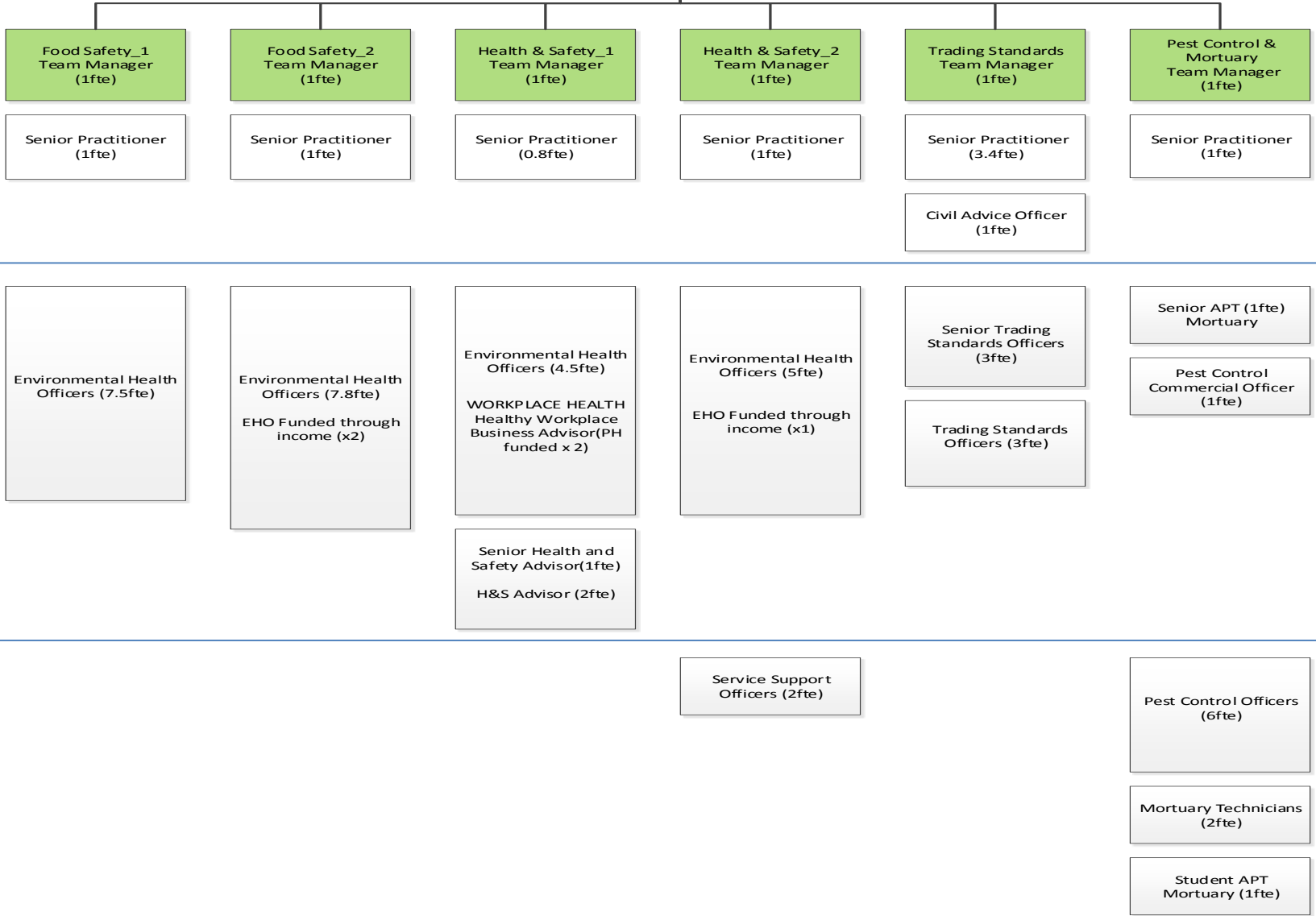
*Estab=64.0fte*

Band 5

Band 4

Band 3

Band 2



# City Management and Communities Public Protection and Licensing: Residential Services

| Pay scale | AS IS FTE |
|-----------|-----------|
| Band 6    | 0         |
| Band 5    | 1         |
| Band 4    | 8         |
| Band 3    | 48        |
| Band 2    | 3         |
| Total     | 60        |

Band 5

**Residential Services**  
**Head of Service**  
**Ian Hennessy**

*Estab=61.0fte*

Band 4

**Residential\_1**  
**Team Manager**  
 (1fte)

South (Covering  
 Knightsbridge Ward,  
 Churchill, Tachbrook,  
 Vincent Square & Warwick)

**Residential\_2**  
**Team Manager**  
 (1fte)

North  
 ( Covering Queens  
 Park, Harrow Road and

Senior Practitioner  
 (1fte)

**Residential\_3**  
**Team Manager**  
 (1fte)

North West  
 (Covering Westbourne,  
 Bayswater and  
 Lancaster Gate)

Senior Practitioner  
 (1fte)

**Residential\_4**  
**Team Manager**  
 (1fte)

East Team  
 (Covering Abbey Road,  
 Regents Park, Marylebone  
 High Street, West End and  
 St James's)

**Residential\_5**  
**Team Manager**  
 (1fte)

Central (Covering  
 Bryanston and Dorset ,  
 Church St, Hyde Park  
 and Little Venice)

**Residential\_HIA**  
**Team Manager**  
 (1fte)

Band 3

Environmental Health  
 Officers (3fte)

Neighbourhood  
 Problem Solving  
 Coordinator (2fte)

City Inspectors (3fte)

Senior  
 City Inspector (1fte)

Environmental Health  
 Officers (4fte)

Neighbourhood  
 Problem Solving  
 Coordinator (1fte)

City Inspectors (3fte)

Environmental Health  
 Officers (4fte)

Neighbourhood  
 Problem Solving  
 Coordinator (1fte)

City Inspectors (4fte)

Environmental Health  
 Officers (3fte)

Neighbourhood  
 Problem Solving  
 Coordinator (1fte)

City Inspectors (4fte)

Environmental Health  
 Officers (3fte)

Neighbourhood  
 Problem Solving  
 Coordinator (1fte)

City Inspectors (4fte)

Environmental Health  
 Officers (1fte)  
 Funded through  
 income (1fte)

Service Development  
 Officer (1fte)

HIA Caseworker (1fte)

HIA Surveyors  
 (2fte)

Band 2

Service Support  
 Officers (3fte)

Apprentices x 3

# City Management and Communities Public Protection and Licensing: West End & City Coordination

| Pay scale    | AS IS FTE |
|--------------|-----------|
| Band 6       | 0         |
| Band 5       | 1         |
| Band 4       | 8         |
| Band 3       | 67        |
| Band 2       | 3         |
| <b>Total</b> | <b>79</b> |

